

Let the Magic Lure You Away

**\$50K
OFF
May 1-10**

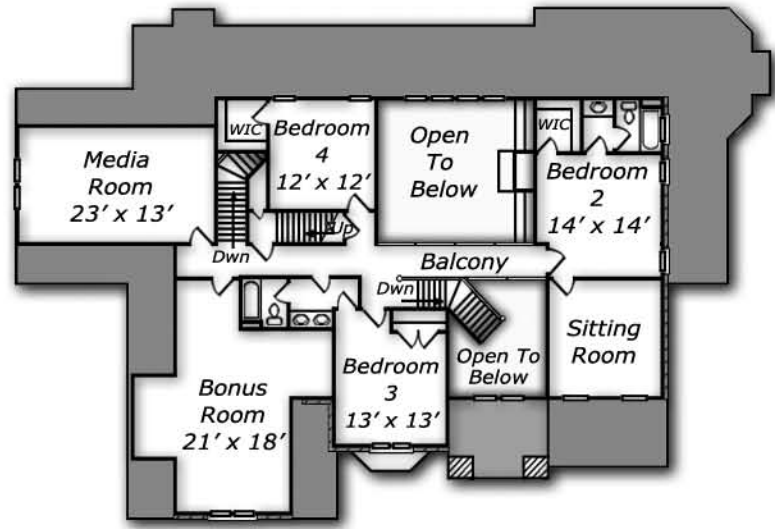
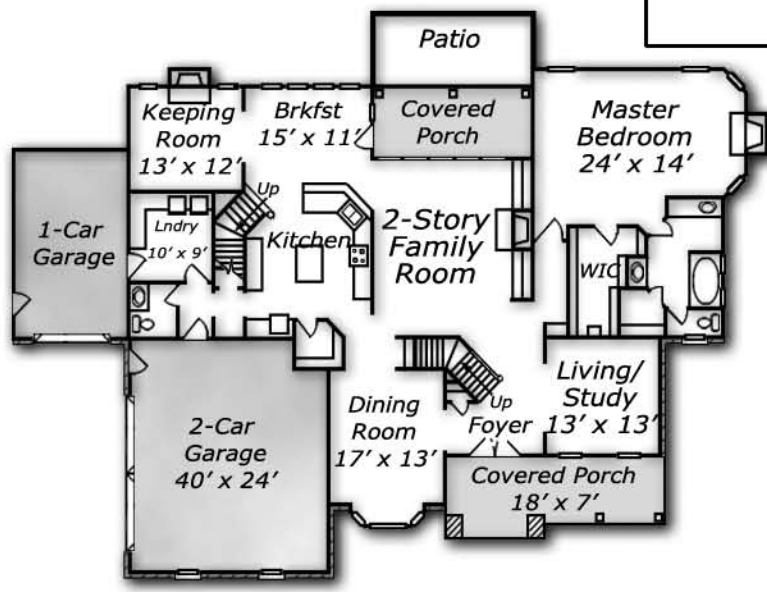


\$799,900
~~**\$849,900**~~
MLS # 986702

Ted Keith Builder

Total living area is
4,309 sq. ft. per plans
Lot size .985 acres

**1084 Tacketts Pond Drive
Lot #159**



- 4 bedroom, 3.5 bath
- Walk-up Attic access
- Covered Porch and Patio
- Keeping Room with fireplace
- 1st Floor Master Suite with fireplace and "California Closet" system
- Island kitchen with walk-in pantry

- 2nd floor media room, bonus, and sitting room
- "Back" staircase to bonus room and media room
- Split 3-car garages
- 2-story foyer and family room
- Ceramic tile in all water access areas
- Second floor Media Room and Sitting Room
- Central Vacuum, Security, and Irrigation Systems



Marketed by **STANDOUT PROPERTIES**, for Sales Information contact:
www.standoutproperties.com

Sales Center 919.866.1213 Stan Pickett 919.272.2898 Ann Ward 919.274.6678

www.EthanGlenFineHomes.com

Ethan's Glen is the Triangle's Debut Neighborhood from Contentnea Creek Development Company. Ethan's Glen hosts a Community Pool, Clubhouse, and nature trails. Please verify school assignments with sales staff at Ethans Glen.

***All Information deemed reliable but not guaranteed*