

Let the Magic Lure You Away

\$50K

OFF

May 1-10



**ETHAN'S GLEN**

**\$799,900**

~~**\$849,900**~~

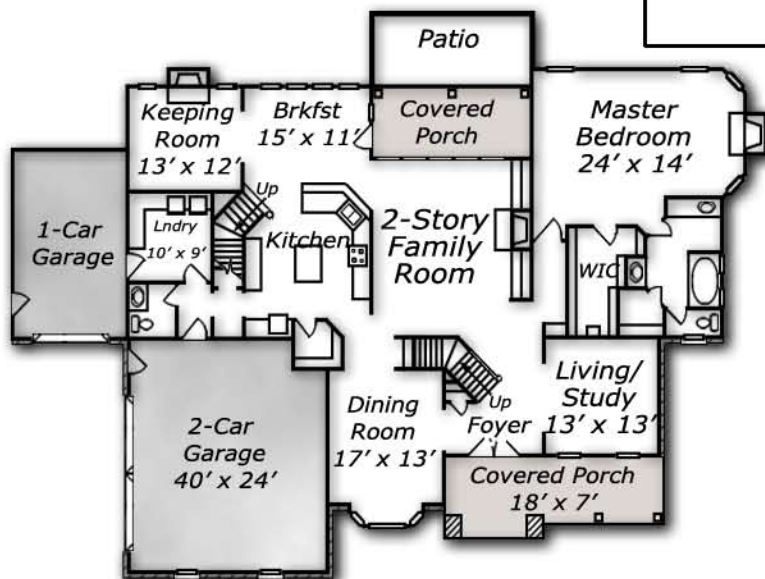
**MLS # 986702**

**Ted Keith Builder**

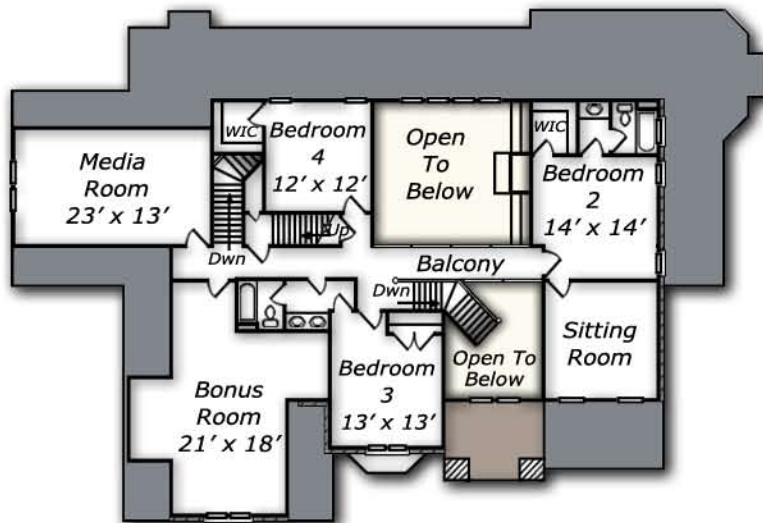
Total living area is  
4,309 sq. ft. per plans  
Lot size .985 acres



**1084 Tacketts Pond Drive  
Lot #159**



*First Floor*



*Second Floor*

- 4 bedroom, 3.5 bath
- Walk-up Attic access
- Covered Porch and Patio
- Keeping Room with fireplace
- 1st Floor Master Suite with fireplace and "California Closet" system
- Island kitchen with walk-in pantry

- 2nd floor media room, bonus, and sitting room
- "Back" staircase to bonus room and media room
- Split 3-car garages
- 2-story foyer and family room
- Ceramic tile in all water access areas
- Second floor Media Room and Sitting Room
- Central Vacuum, Security, and Irrigation Systems



Marketed by **STANDOUT PROPERTIES**, for Sales Information contact:  
[www.standoutproperties.com](http://www.standoutproperties.com)

Sales Center  
919.866.1213

Stan Pickett  
919.272.2898

Ann Ward  
919.274.6678

[www.EthanGlenFineHomes.com](http://www.EthanGlenFineHomes.com)

Ethan's Glen is the Triangle's Debut Neighborhood from Contentnea Creek Development Company. Ethan's Glen hosts a Community Pool, Clubhouse, and nature trails. Please verify school assignments with sales staff at Ethans Glen.

**\*\*All Information deemed reliable but not guaranteed**